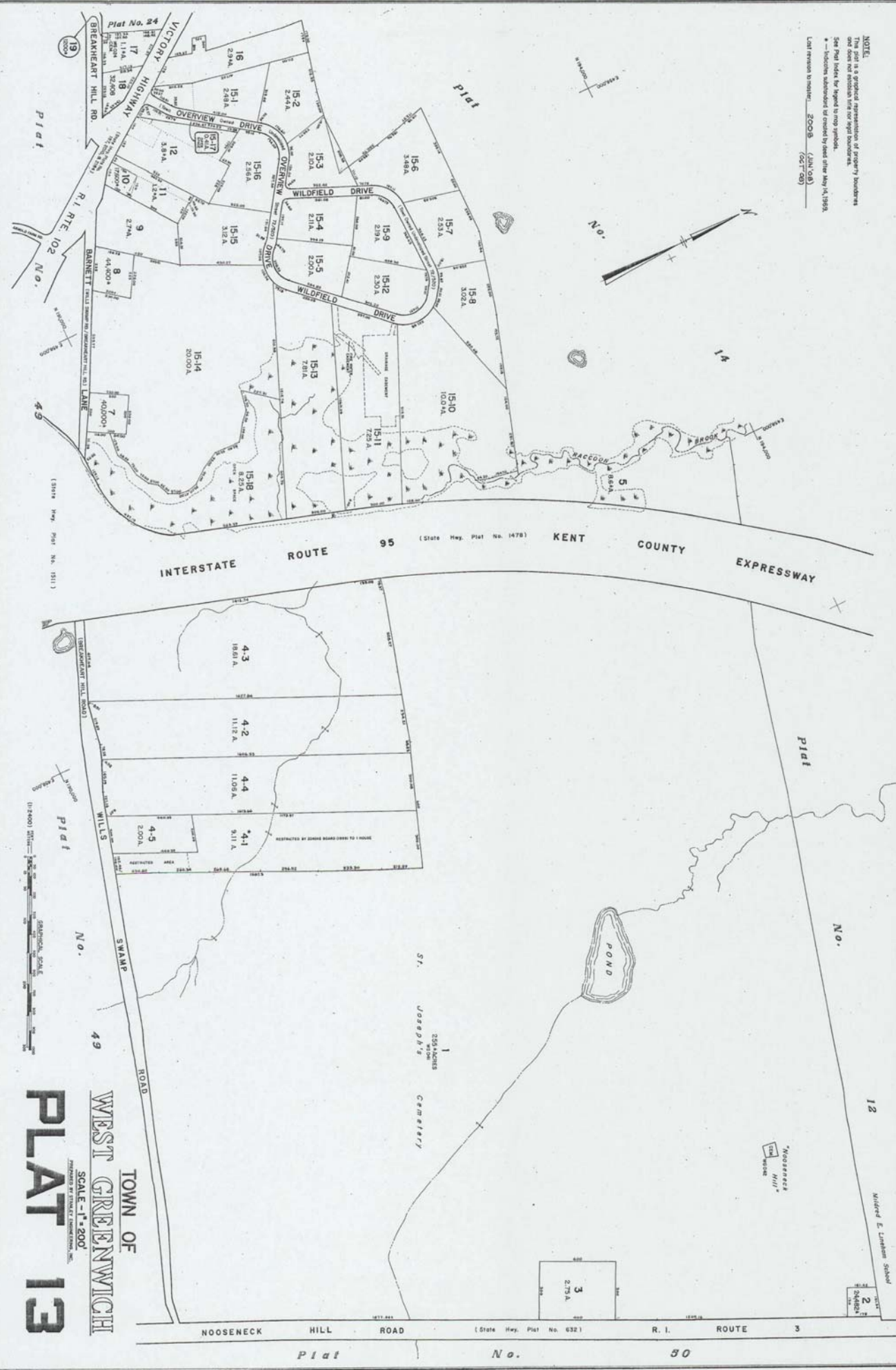


NOTE:
 This plat is a graphical representation of property boundaries and is not a survey. It is subject to change without notice.
 The Plat Index for this plat is on page 13 of this volume.
 * - Indicates subdivision of record by deed after May 14, 1999.
 Last revision to number: 2008 (JUN 08)
 (Oct 17-09)



TOWN OF WEST GREENWICH
 SCALE - 1" = 200'
PLAT 13

INTERSTATE ROUTE 95 (State Hwy. Plat No. 1478) KENT COUNTY EXPRESSWAY

NOOSENECK HILL ROAD (State Hwy. Plat No. 632) R. I. ROUTE 3

Plat No. 80