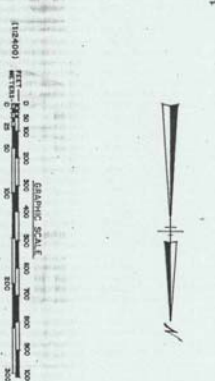
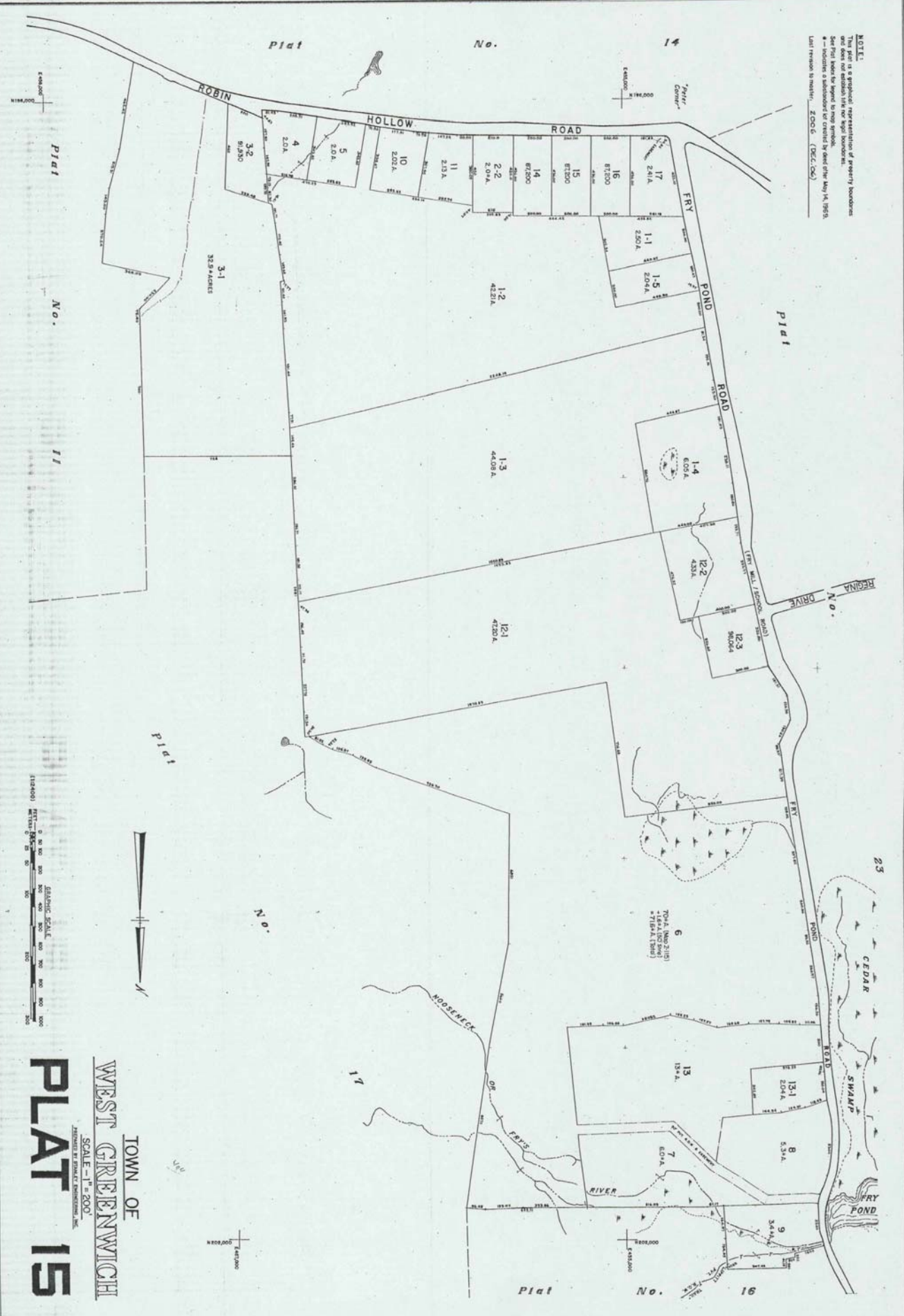


**NOTE:**  
 This plat is a graphical representation of property boundaries and does not constitute title nor legal instruments.  
 See Plat Index for legend to map symbols.  
 \* - indicates a subdivision first created by deed after May 14, 1969.  
 Last Revision to master, ZOO 5, (DEC. 04)



TOWN OF  
**WEST GREENWICH**  
 SCALE - 1" = 200'  
**PLAT 15**