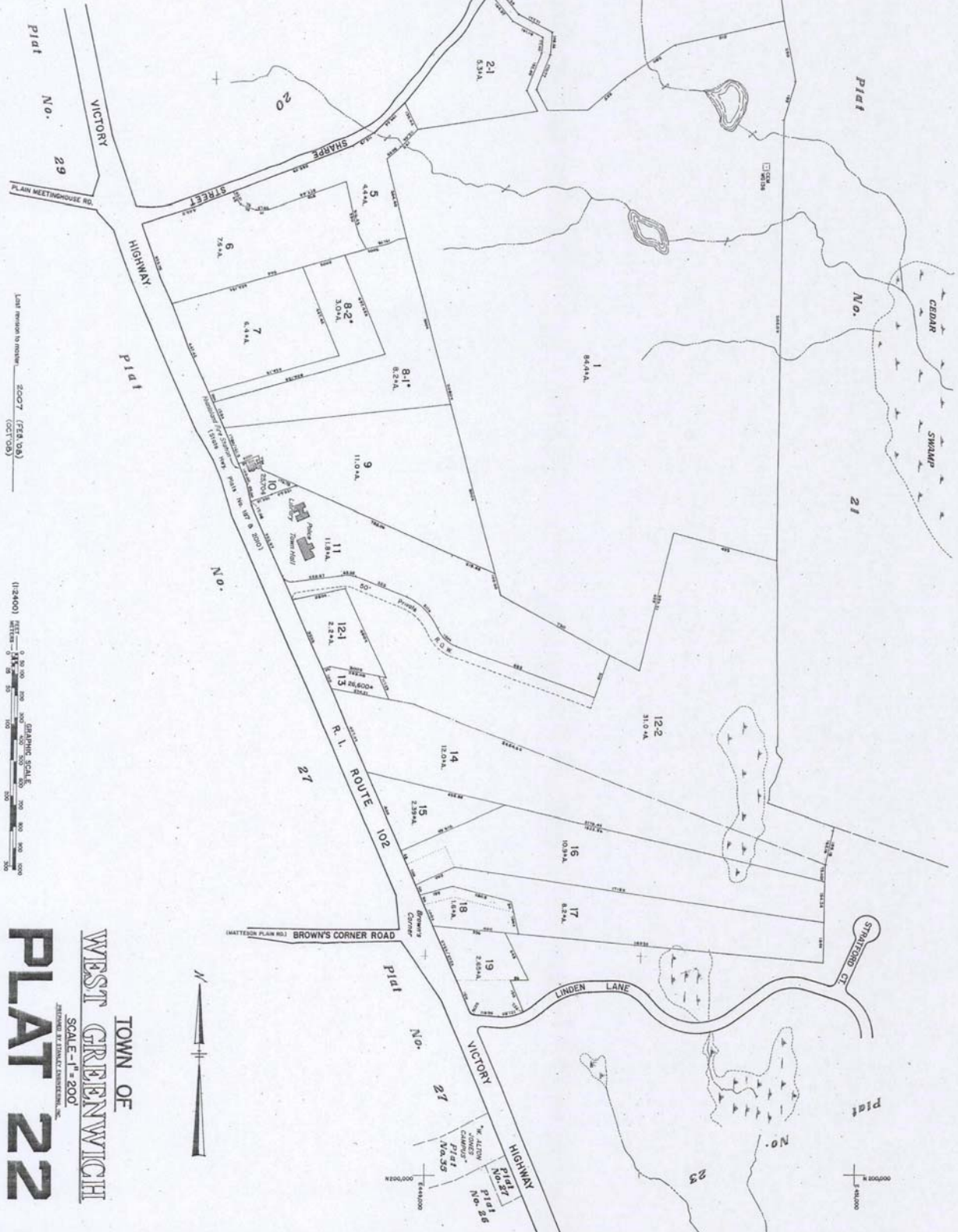


NOTE:  
 \* - Indicates a subdivision created by deed after May 14, 1968.  
 The Plat is a typical representation of property boundaries and does not indicate title or legal boundaries.

NOTE:  
 This plat is a typical representation of property boundaries and does not indicate title or legal boundaries.



LAND DIVISION BY RESOLUTION 2007 (758, 08) (C&T 08)



TOWN OF  
**WEST GREENWICH**  
 SCALE - 1" = 200'  
**PLAT 22**

