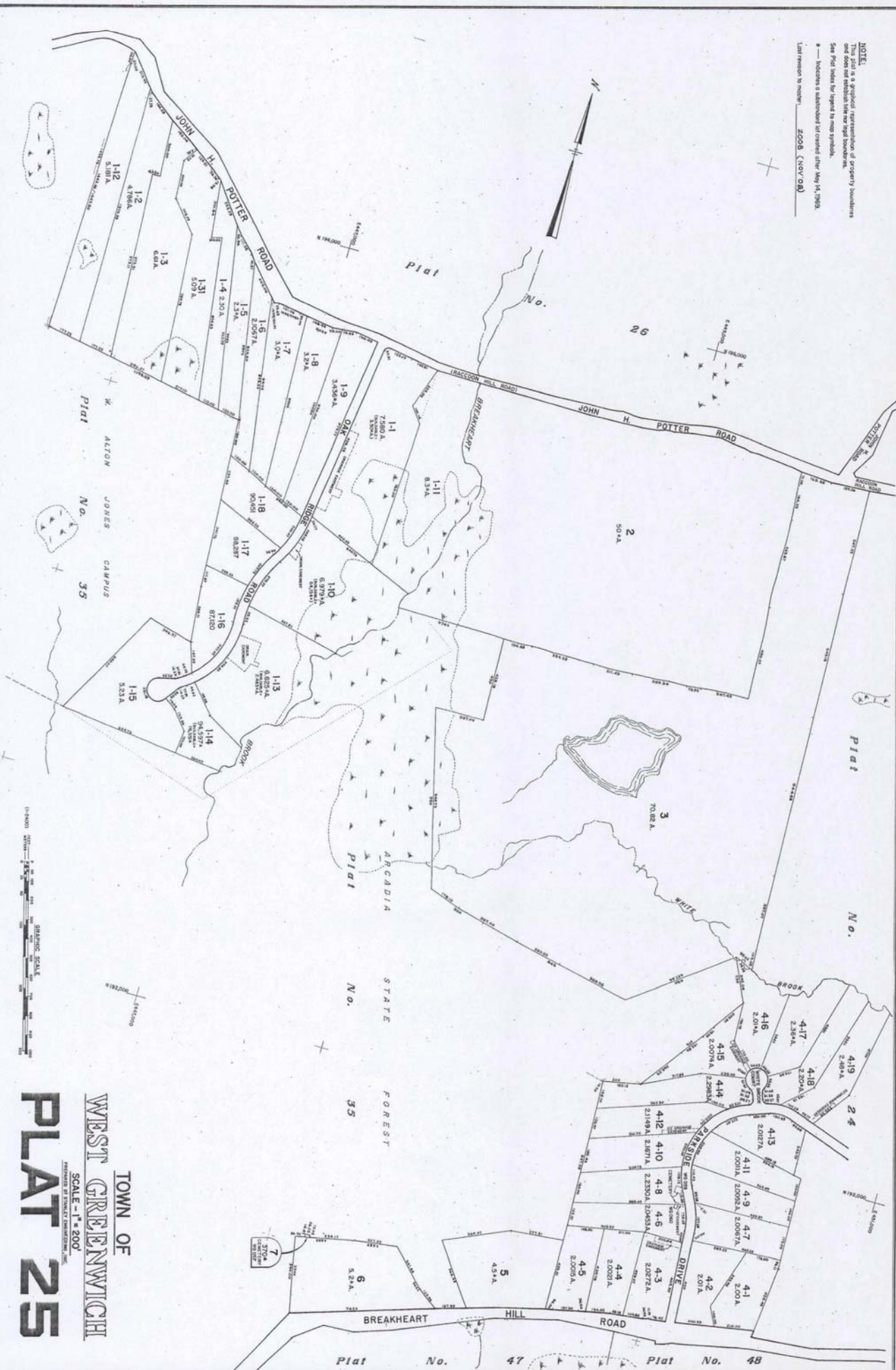


NOTE
 This plat is a graphical representation of property boundaries and does not establish title nor legal boundaries. See Plat Index for legend to map symbols.
 * Indicates a subdivision first created after May 14, 1959.
 Last revision to record: 2008 (NOV/08)



TOWN OF WEST GREENWICH
 SCALE - 1" = 200'
PLAT 25