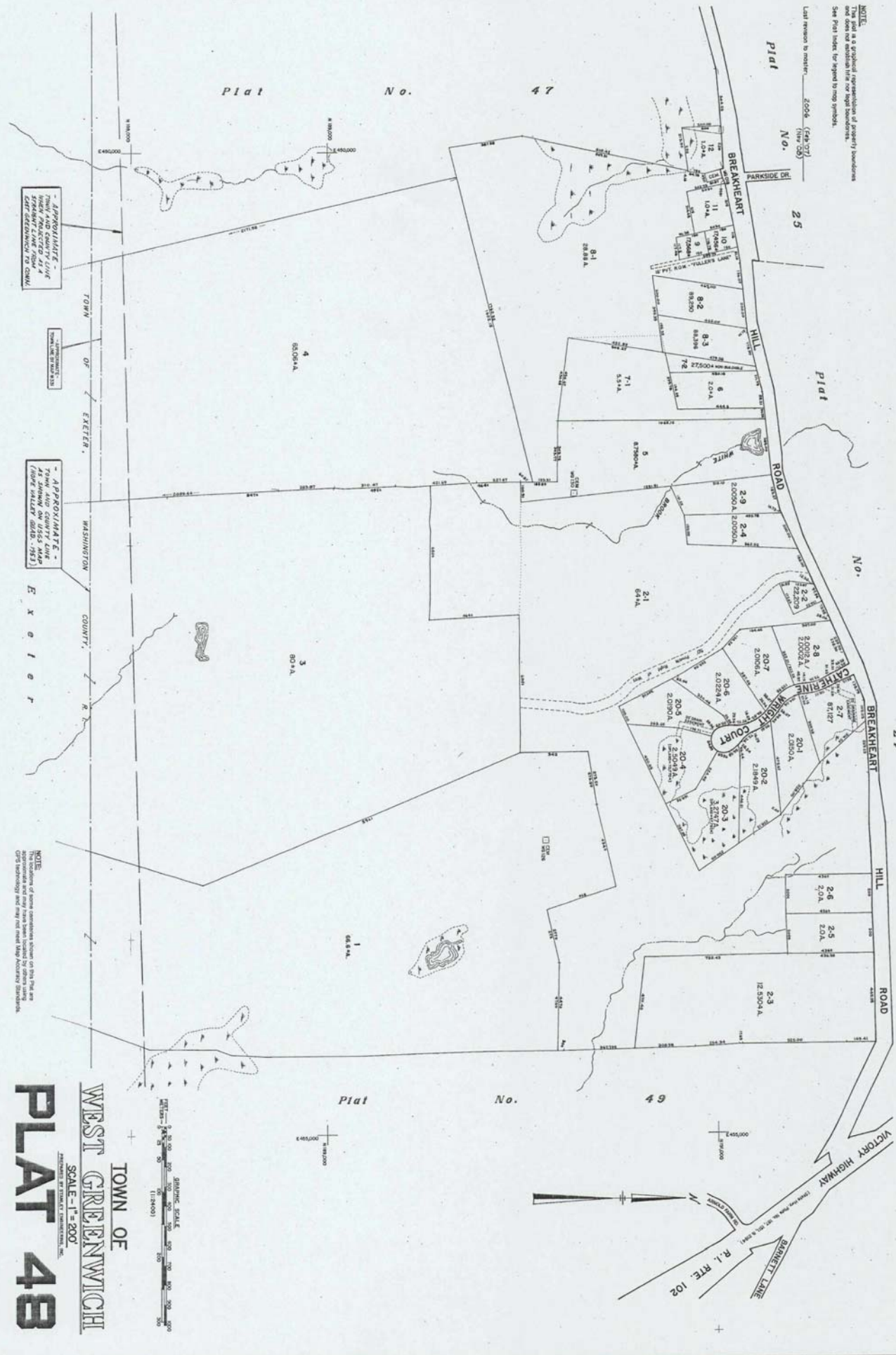


NOTE:  
This is a graphical representation of property boundaries and does not constitute a title or legal boundaries. See Plat Index for typed to map symbols.

Last revision to master: 2006 (1/24/12) (1/1/06)



- APPROXIMATE -  
TOWN AND COUNTY LINE  
AS SHOWN ON USGS MAPS  
(FROM SHEETS 4800, 4810, 4820)

- APPROXIMATE -  
TOWN AND COUNTY LINE  
AS SHOWN ON USGS MAPS  
(FROM SHEETS 4800, 4810, 4820)

- APPROXIMATE -  
TOWN AND COUNTY LINE  
AS SHOWN ON USGS MAPS  
(FROM SHEETS 4800, 4810, 4820)

NOTE:  
This plat was prepared using GPS technology and may not meet the accuracy standards of a professional surveyor.

TOWN OF  
**WEST GREENWICH**  
SCALE - 1" = 200'  
**PLAT 48**

