

Fry Pond Conservation Area Trail Map

LOCATION

Trailhead is located behind the West Greenwich Town Hall at 280 Victory Highway (Rte 102), 3 miles north of Rte 95, Exit 5b.

TRAILS

Tefft Trail: 0.5 miles, White Blaze
Difficulty Rating 1-B

Loop Trail: 1.1 miles, White Blaze
Difficulty Rating 2-C

Hillside Trail: 0.7 miles, Yellow Blaze
Difficulty Rating 4-C

TRAIL USE GUIDELINES

- Observe posted rules and regulations
- Motorized vehicles are prohibited
- No fires / No camping
- No Hunting
- Leave no trace, please carry out trash
- No collecting of vegetation

SAFETY GUIDELINES

SAFETY IS YOUR RESPONSIBILITY - STAY WITHIN YOUR LIMITS

The information provided here on trail lengths, trail blaze colors, incline numbers and tread rating can assist you in making safe hiking decisions.

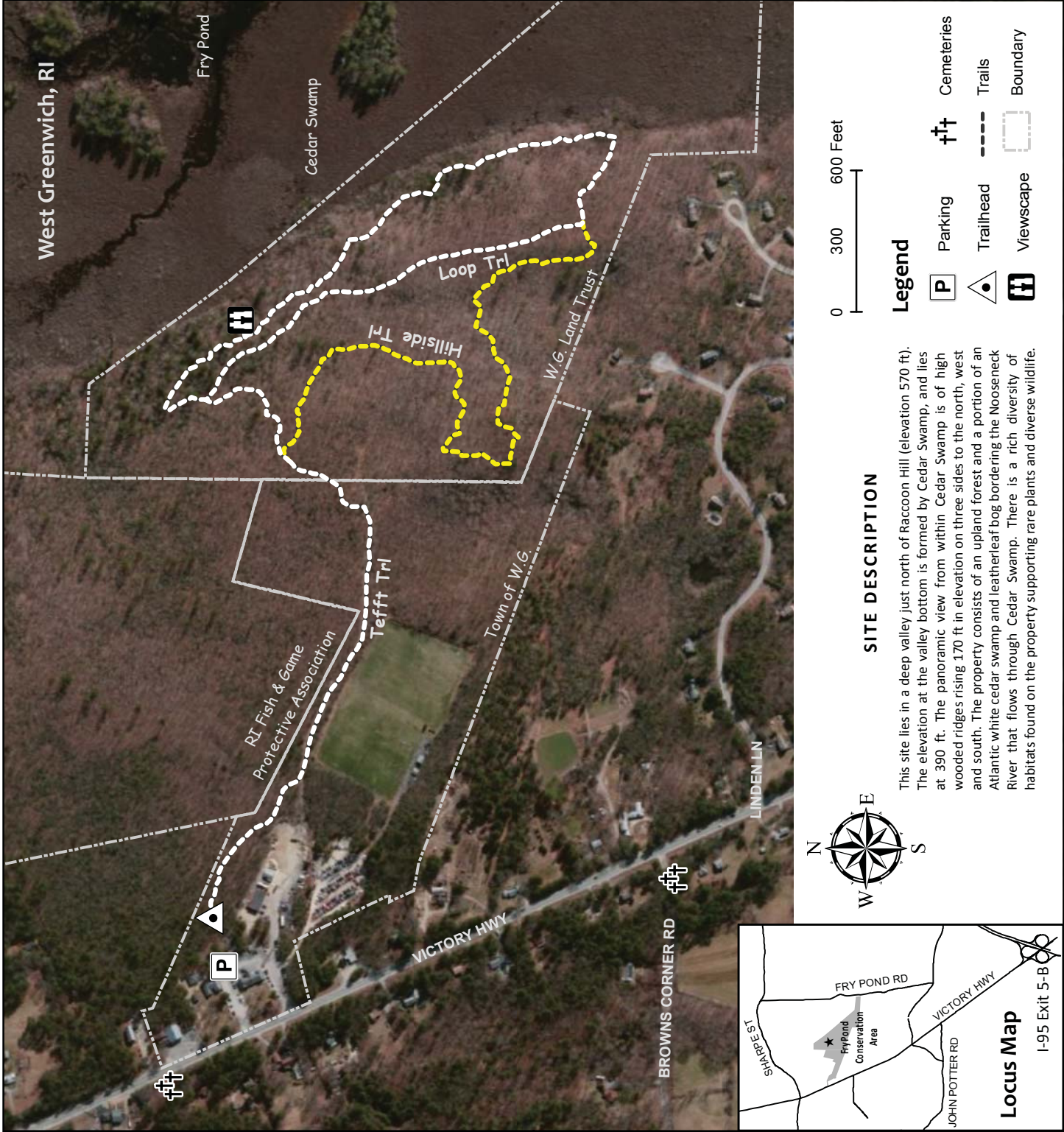
TRAIL DIFFICULTY RATINGS

Incline Number:

- 1 - Very little hill climbing
- 2 - Some moderate hill climbing
- 3 - Some significant hill climbing
- 4 - A good deal of significant hill climbing
- 5 - Nearly continuous steep hill climbing

Tread Rating:

- A - Trail is most entirely on pavement; probably suitable for baby strollers.
- B - A significant part of the trail is well-groomed with very little difficult terrain.
- C - A significant part of the trail has somewhat difficult terrain (rocky or rooted paths).
- D - A significant part of the trail has very difficult terrain.
- E - The majority of the trail has very difficult terrain.



Map by the Southern RI Conservation District using RIGIS data, Town data, and ESRI World Imagery. Parcel boundaries are approximate. Map made possible by the West Greenwich Land Trust. Find this trail and more at www.wglandtrust.org and www.exploreri.org



West Greenwich Land Trust